

NOTICE OF TIMBER HARVESTING SAFETY ZONE

Section 77C, Sustainable Forests (Timber) Act 2004 ('the Act')

The area shown on the map below bounded by the striped orange border is a **timber harvesting safety zone** within the meaning of section 77B of the Act.

The **timber harvesting safety zone** is comprised of all of the following:

- Coupe(s) **829-512-0003**
- State forest within 150 metres from the boundary of the above coupe(s)
- Any road that is closed

Commencement

Timber harvesting operations in the **timber harvesting safety zone** specified in this Notice commence on:

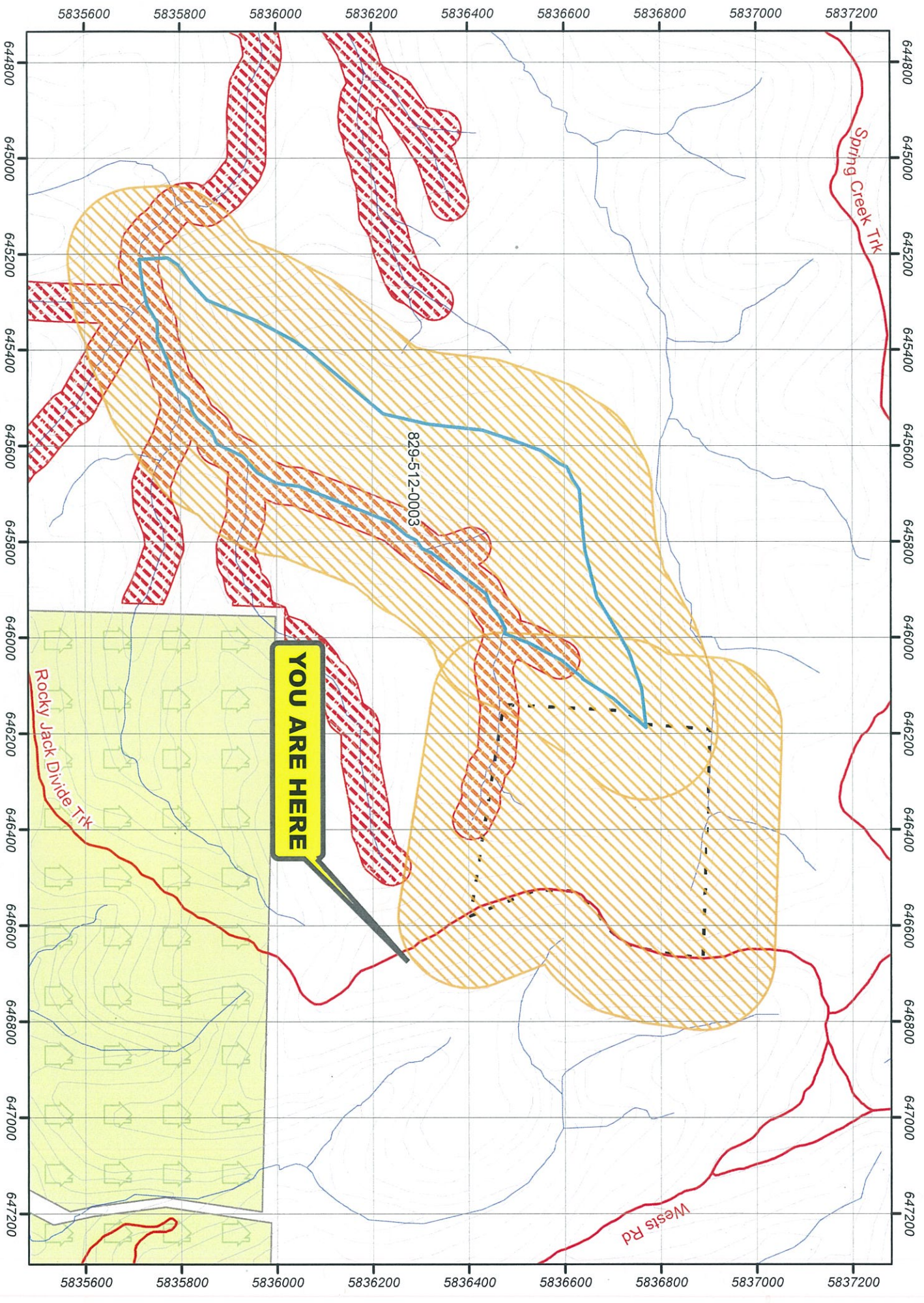
8/2/2019

Offences and penalties

Offences and penalties apply in the **timber harvesting safety zone** specified in this Notice.

Offences include:

- To enter or remain in the timber harvesting safety zone
- To allow a dog to enter a timber harvesting safety zone,
- To remove or destroy a barrier or fence,
- To remove or destroy a notice.
- To be in possession of a prohibited thing in a timber harvesting safety zone



LEGEND

- | | | |
|----------------------|-------------------------------|---------------------------|
| Base Features | Coupe Boundaries | Traffic Management |
| Road | Approved TRP Coupe | Signage |
| Watercourse | Approved TRP Diveway | Stop/Go Control Point |
| Contour | Timber Harvesting Safety Zone | Barrier/Gate |
| Private Property | | Other |
| Landing | | |



Disclaimer: This map is generated from VicForests and Victorian Government data and may be of assistance to you. However, VicForests does not guarantee that the publication is without flaw of any kind and therefore disclaims all liability for error, loss or damage which may arise from reliance upon it.