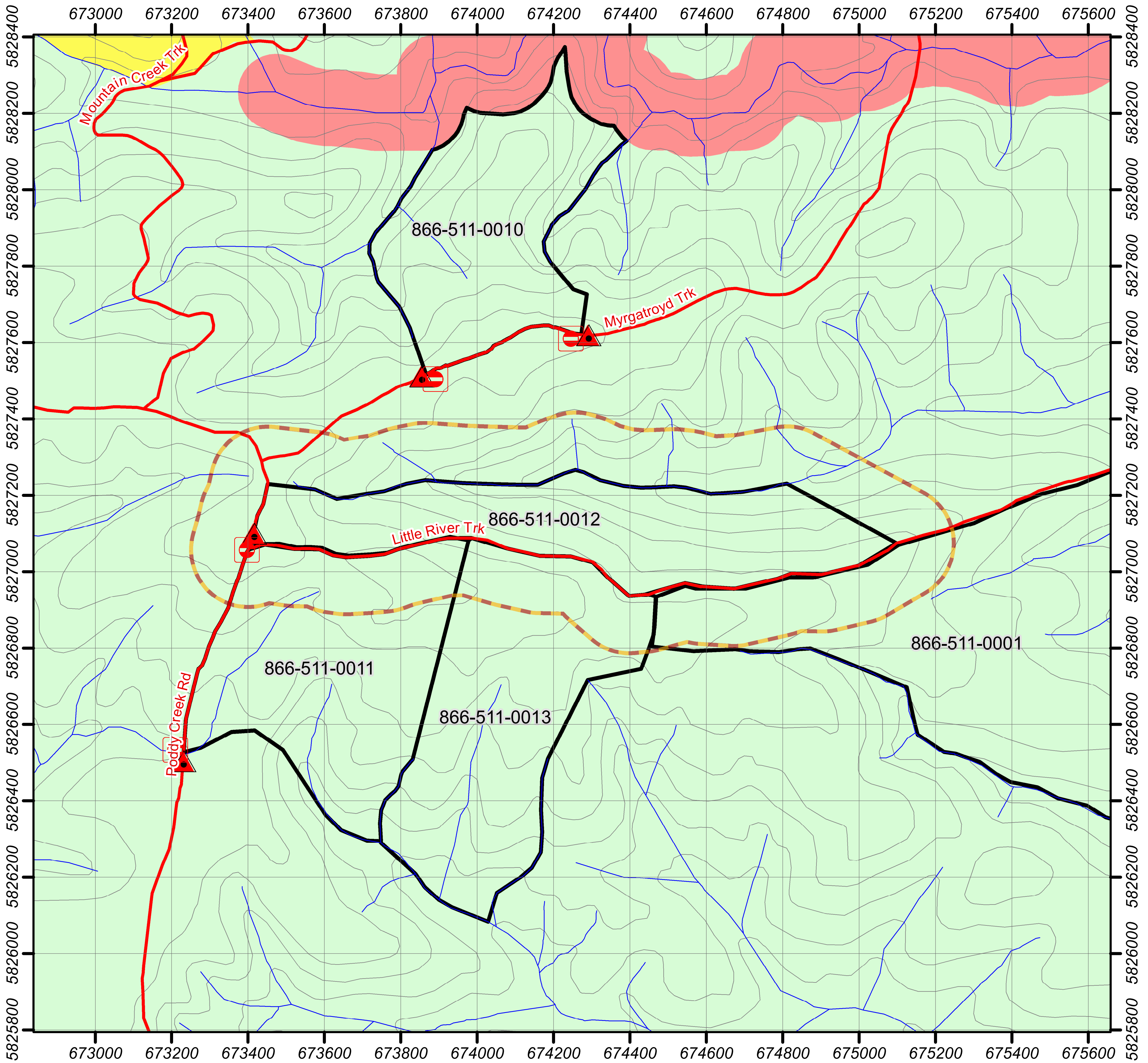




# Timber Harvesting Safety Zone Map

FMA:	EG	District:	Cann River	Gross Area (ha):	31.69
Coupe Address:	866-511-0012	Easting/Northing:	674287 5827115	Lat/Long:	37d 41m 12s S 148d 58m 36s E
Coupe Name:	Chaps	Contractor:	Fenner	UHF:	6



## LEGEND

### Forest Management Zones

- General Management Zone
- Special Management Zone
- Special Protection Zone
- Code of Forest Practice
- Other Public Land
- Conservation Parks and Reserves
- Other Parks and Reserves
- OPR - Limited Timber Harvesting
- Plantations
- Commonwealth Land

### Base Features

- Road
- Hydrology
- Contour
- Private Property
- Landing

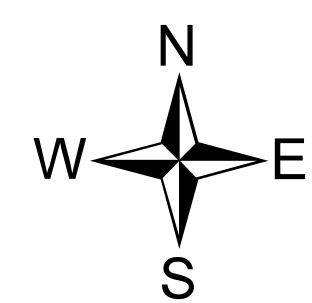
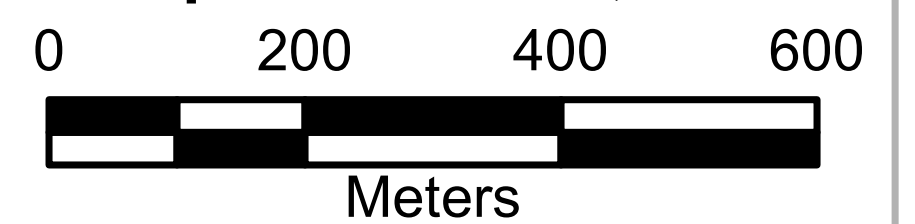
### Traffic Management

- Signage
- Stop/Go Control Point
- Barrier/Gate
- Other

### Coupe Boundaries

- Approved TRP Coupe
- Approved TRP Driveway
- Timber Harvesting Safety Zone

Map Scale 1:15,000



Projection: MGA55



Map Date: 23/04/2018

Map Template:

Produced By: John Cuthbertson

Disclaimer: This map is generated from VicForests and Victorian Government data and may be of assistance to you. However, VicForests does not guarantee that the publication is without flaw of any kind and therefore disclaims all liability for error, loss or damage which may arise from reliance upon it.