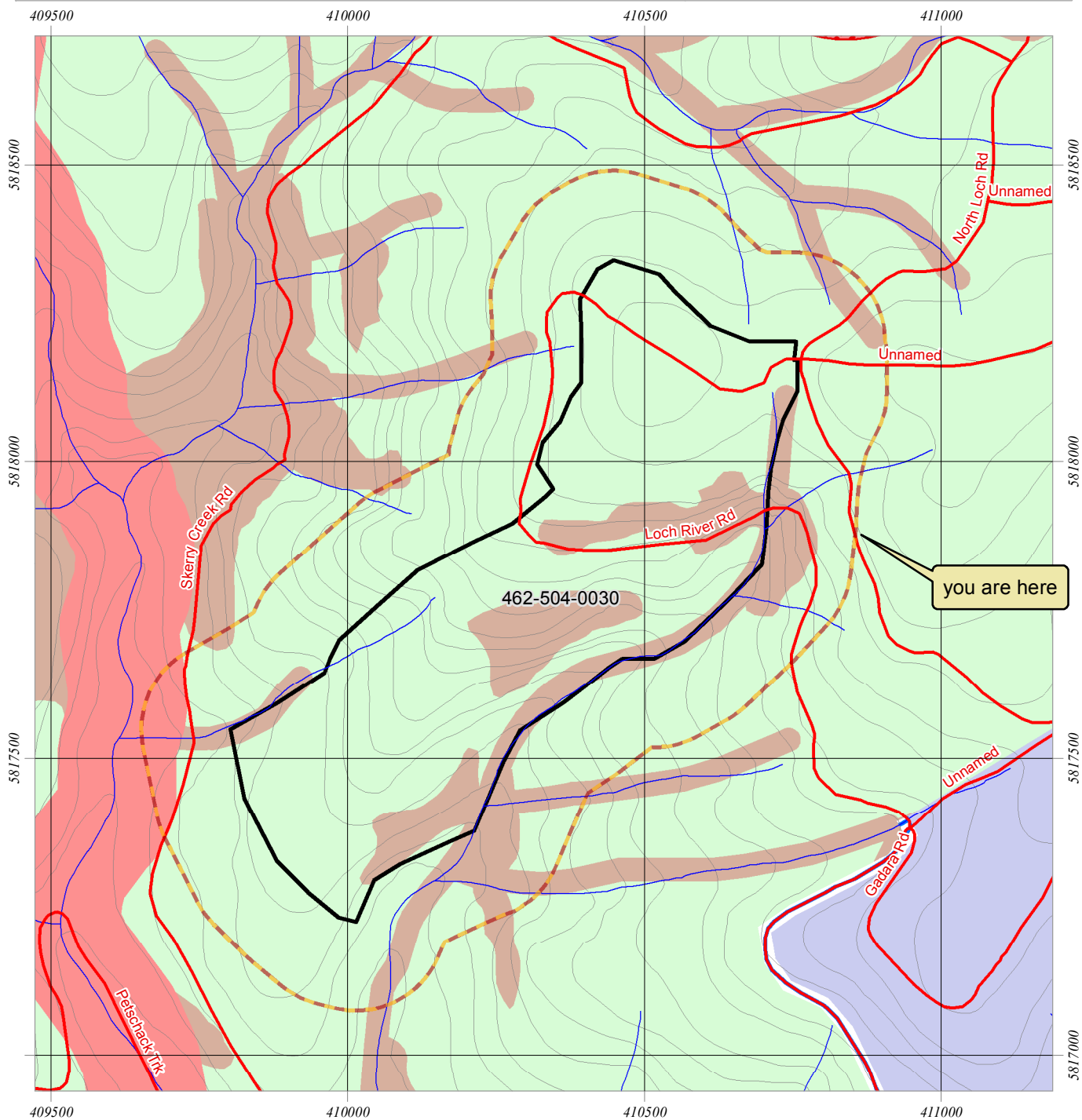


FMA: CG	District: Noojee	Gross Area (ha): 25.93
Coupe Address: 462-504-0030	Easting/Northing: 410356 5817813	Lat/Long: 37d 46m 58s S 145d 58m 55s E



## LEGEND

### Forest Management Zones

- General Management Zone
- Special Management Zone
- Special Protection Zone
- Code of Forest Practice
- Other Public Land
- Conservation Parks and Reserves
- Other Parks and Reserves
- OPR - Limited Timber Harvesting
- Plantations
- Commonwealth Land

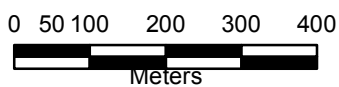
### Coupe Boundaries

- Approved TRP Coupe
- Approved TRP Driveway
- Timber Harvesting Safety Zone

### Base Features

- Road
- Hydrology
- Contour
- Private Property
- Landing

Map Scale 1:10,000



Projection  
GDA 94  
(Zone 55)



Map Date: 15/11/2017

Map Template:

Produced By: Adam P Green

Disclaimer: This map is generated from VicForests and Victorian Government data and may be of assistance to you. However, VicForests does not guarantee that the publication is without flaw of any kind and therefore disclaims all liability for error, loss or damage which may arise from reliance upon it.