

NOTICE OF TIMBER HARVESTING SAFETY ZONE

Section 77C, Sustainable Forests (Timber) Act 2004 ('the Act')

The area shown on the map below bounded by the striped orange border is a **timber harvesting safety zone** within the meaning of section 77B of the Act.

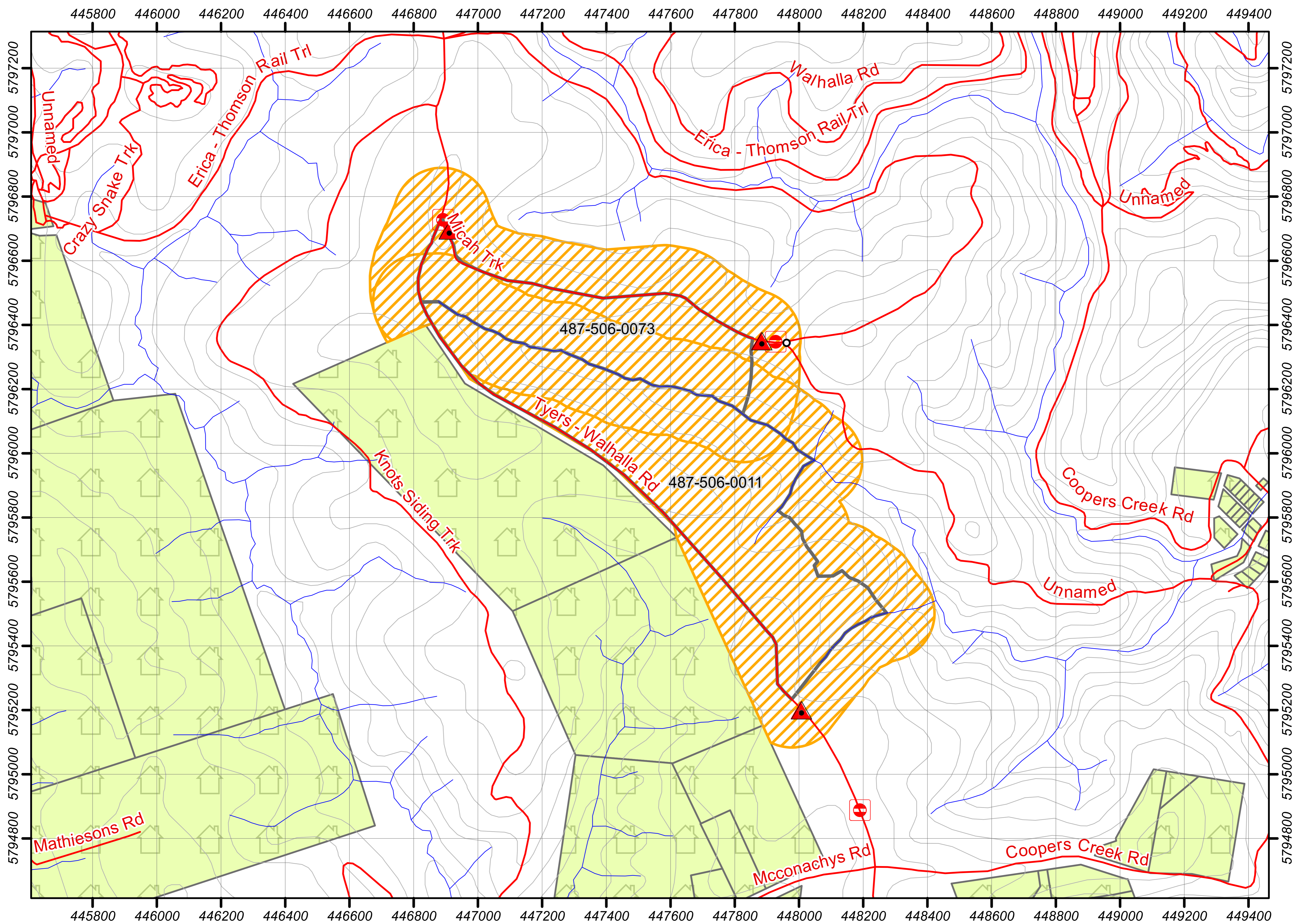
<p>The timber harvesting safety zone is comprised of all of the following:</p> <ul style="list-style-type: none"> Coupe(s) 487-506-0011, 487-506-0073 State forest within 150 metres from the boundary of the above coupe(s) Any road that is closed 	<p>Commencement</p> <p>Timber harvesting operations in the timber harvesting safety zone specified in this Notice commence on:</p> <p style="text-align: center;">/ /</p>
---	---

Offences and penalties

Offences and penalties apply in the **timber harvesting safety zone** specified in this Notice.

Offences include:

- To enter or remain in the timber harvesting safety zone
- To be in possession of a prohibited thing in a timber harvesting safety zone
- To allow a dog to enter a timber harvesting safety zone,
- To remove or destroy a barrier or fence,
- To remove or destroy a notice.



LEGEND		
Base Features	Coupe Boundaries	Traffic Management
Road	Approved TRP Coupe	Signage
Watercourse	Approved TRP Driveway	Stop/Go Control Point
Contour	Timber Harvesting Safety Zone	Barrier/Gate
Private Property		Other
Landing		

Map Scale 1:15,000

Meters

Projection: MGA55