




Interactive Map Guide

Welcome to VicForests' Timber Release Plan Interactive Map.

The main screen view for the interactive map is the entire VicForests area of operation. Zoom extents is reached by clicking the 'home' button below - 

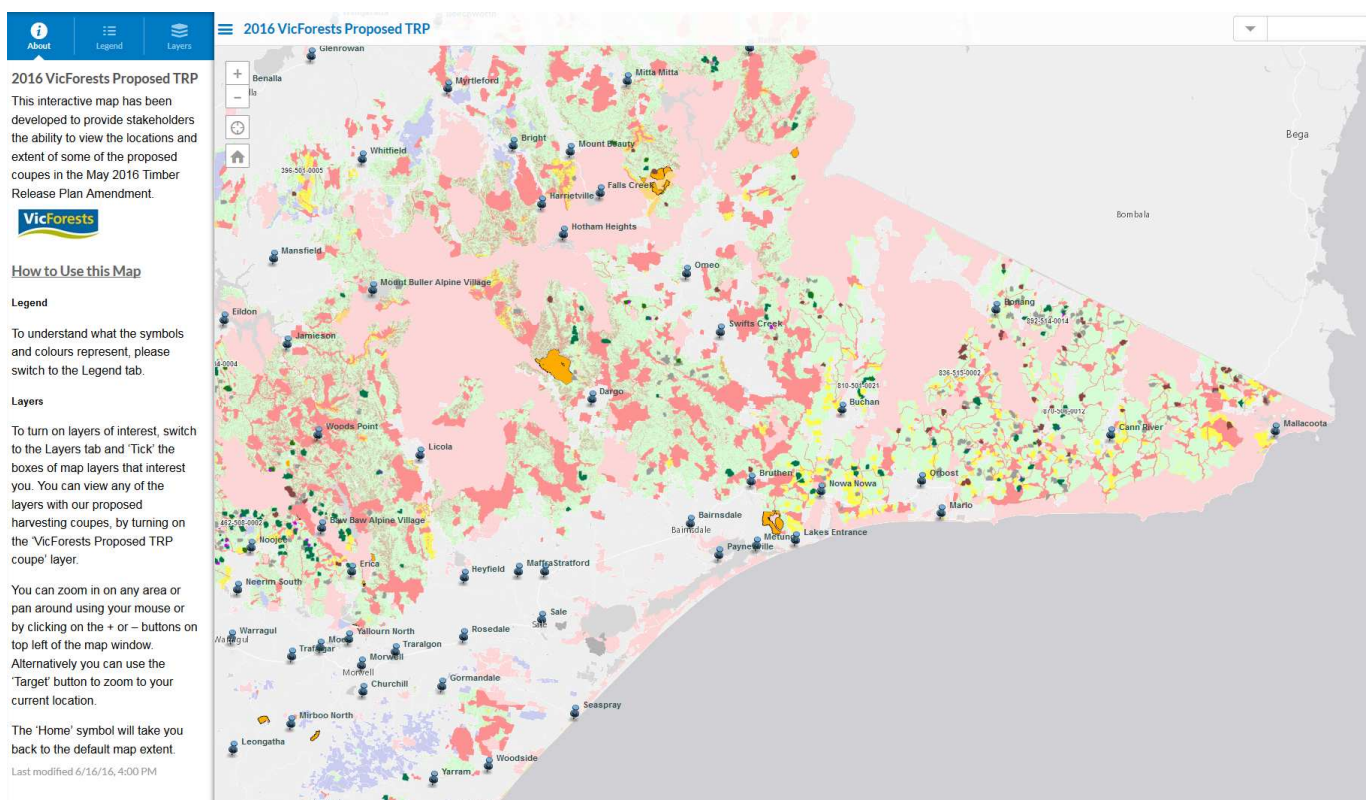


Figure 1 – Overview

There are two ways of navigation:

1. Using your scroll button to zoom in and out of areas, and click and drag to move around areas – as per Google maps.
2. Using the search button located on the top right hand side of the screen.



Searches on the interactive map are conducted by area or address. *Note please ensure you specify VIC as the state.*

Proposed new coupes are a **green polygon**, coupe driveways are a **purple polygon**, removed coupes that are regenerating are a grey polygon and removed coupes that are unharvested are a **brown polygon**. Simply click **once** on a polygon for coupe information.

The layers function on the left hand side enables the user to switch on and off features highlighted on the map.

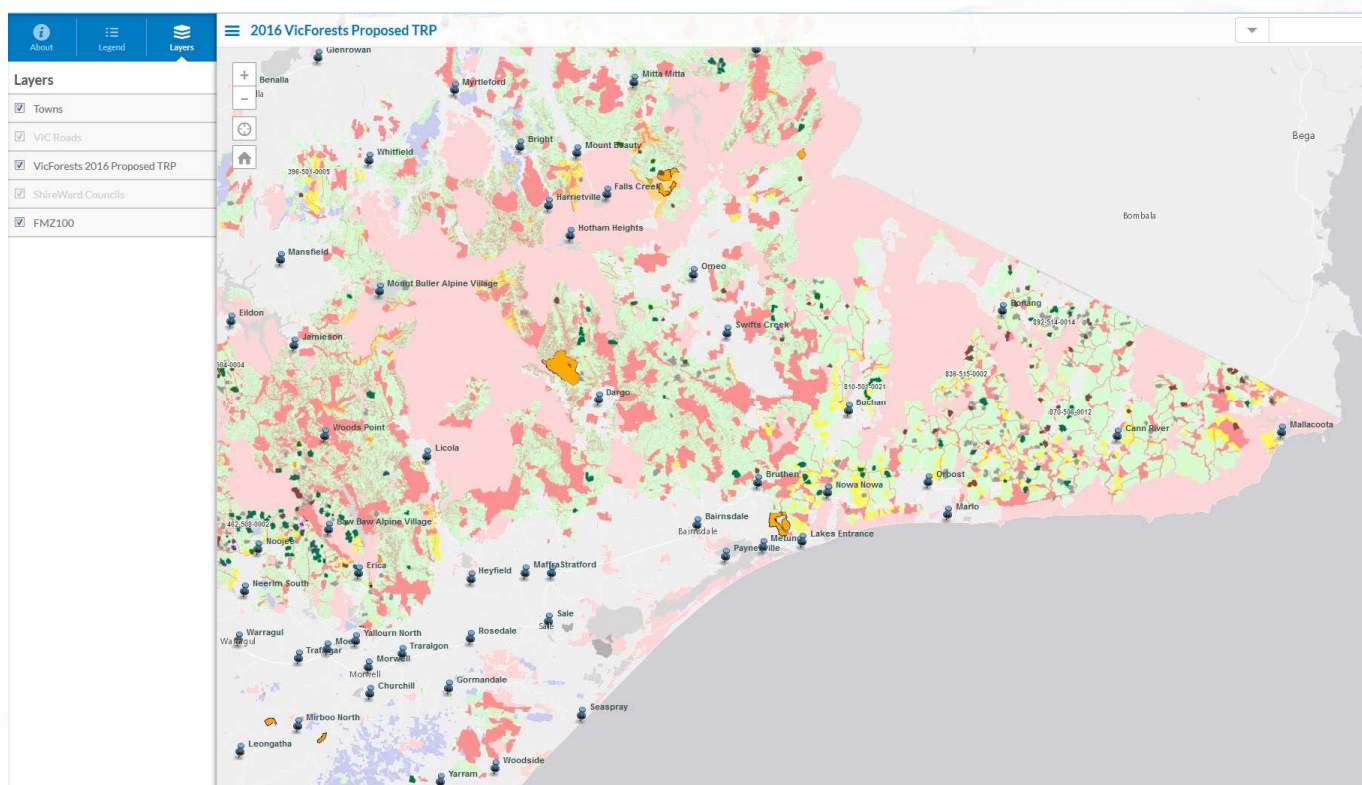


Figure 2 – Approved coupe locations and information

For further assistance with navigating the interactive map please email: vfs.trp@vicforests.com.au